

# Garden Gate Plaids

SUMMER

SPRING

WINTER

Quilts designed  
by Becky Cogan  
Finished sizes:  
70" x 91½"

*Fabrics by*  
**Renée Nanneman**



**makower uk**

1384 Broadway  
New York, NY 10018  
(800) 223-5678  
[www.andoverfabrics.com](http://www.andoverfabrics.com)

# Garden Gate Plaids Quilt

Introducing Andover Fabrics new collection: Garden Gate Plaids by Renée Nanneman  
 Quilt designed by Becky Cogan

Wool plaid blocks partner with cotton sashes and borders to create charming country quilts in a simple double nine patch pattern. This combination of wool and cotton fabrics produces a unique dimensional effect in the finished quilt after quilting. Quick strip piecing methods make the quilt a snap to sew together.

Quilt finishes 70" x 91½"  
 6 Block #1: 18" x 18"  
 6 Block #2: 18" x 18"

## Fabric Requirements

		Yardage	Summer	Winter	Spring
<b>Fabric A</b>	blocks	½ yard	5351-G1	5351-L	5351-L
<b>Fabric B</b>	blocks	½ yard	5352-E	5351-N	5351-N
<b>Fabric C</b>	blocks	½ yard	5353-R1	5352-T	5352-T
<b>Fabric D</b>	blocks	½ yard	5354-N	5354-B	5354-B
<b>Fabric E</b>	blocks	½ yard	5355-G	5355-L	5355-L
<b>Fabric F</b>	blocks	½ yard	5679-R	5355-T	5355-T
<b>*Fabric G</b>	borders, sash	6 yards	5671-R	5486-L	5671-N
<b>Fabric H</b>	backing	5⅞ yards	5668-L	5669-N	5668-L

\* includes binding

## Cutting Directions

**Note:** All measurements are cut sizes and include ¼" seam allowances. Borders are cut the exact lengths required plus ¼" seam allowances. WOF designates the width of fabric from selvedge to selvedge (approximately 42" wide).

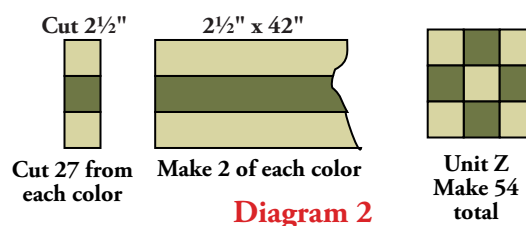
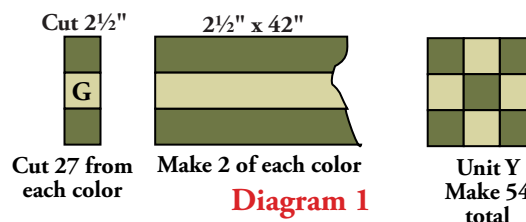
**Fabrics A-F** Cut (6) strips 2½" x WOF from each

**Fabric G** Cut (2) borders 5" x 83", cut lengthwise  
 Cut (2) borders 5" x 70½", cut lengthwise  
 Cut (3) sashes 4" x 61½", cut lengthwise  
 Cut (4) strips 2½" x 81", cut lengthwise for binding  
 Cut (8) sashes 4" x 18½", cut lengthwise  
 Cut (36) strips 2½" x WOF

**Backing (H)** Cut (2) panels 39" x 100", pieced to fit quilt top with overlap on all sides

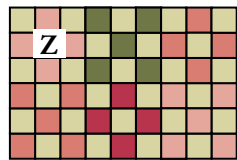
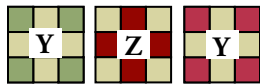
## Making the Quilt

- Referring to Diagram 1, sew 2 Fabric A strips and 1 Fabric G strip together to make a pieced band. Press seam allowances toward the Fabric G strip. Make 2 bands like this with the same color. Sew 2 Fabric G strips and 1 Fabric A strip together to make a band (Diagram 2). Make 2 bands like this. Cut each kind of band into a total of 27 segments each 2½" wide. Repeat with all 6 colors. You will have a total of 54 segments of each color.
- Join segments in the order shown to make 9 of each unit in each color. Make a total of 54 Unit Y and 54 Unit Z.

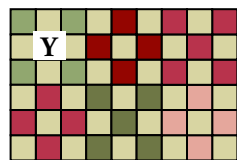
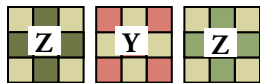


# Garden Gate Plaids Quilt

- Referring to the Block Diagram 3, arrange 5 Unit Y and 4 Unit Z into 3 rows, alternating units as shown. Join the rows. Be sure that if the same color appears twice in a block, the color is used in a Unit Y and a Unit Z. Make 6 blocks like this. Likewise, join 5 Unit Z and 4 Unit Y to make Block 2 (Diagram 4). Make 6 blocks.
- Refer to the Quilt Diagram. Join Block 1's, Block 2's, and the short sashes into 4 rows, alternating the blocks as shown. Sew long sashes between the rows.
- Sew the long border strips to the sides. Sew short borders to top and bottom.



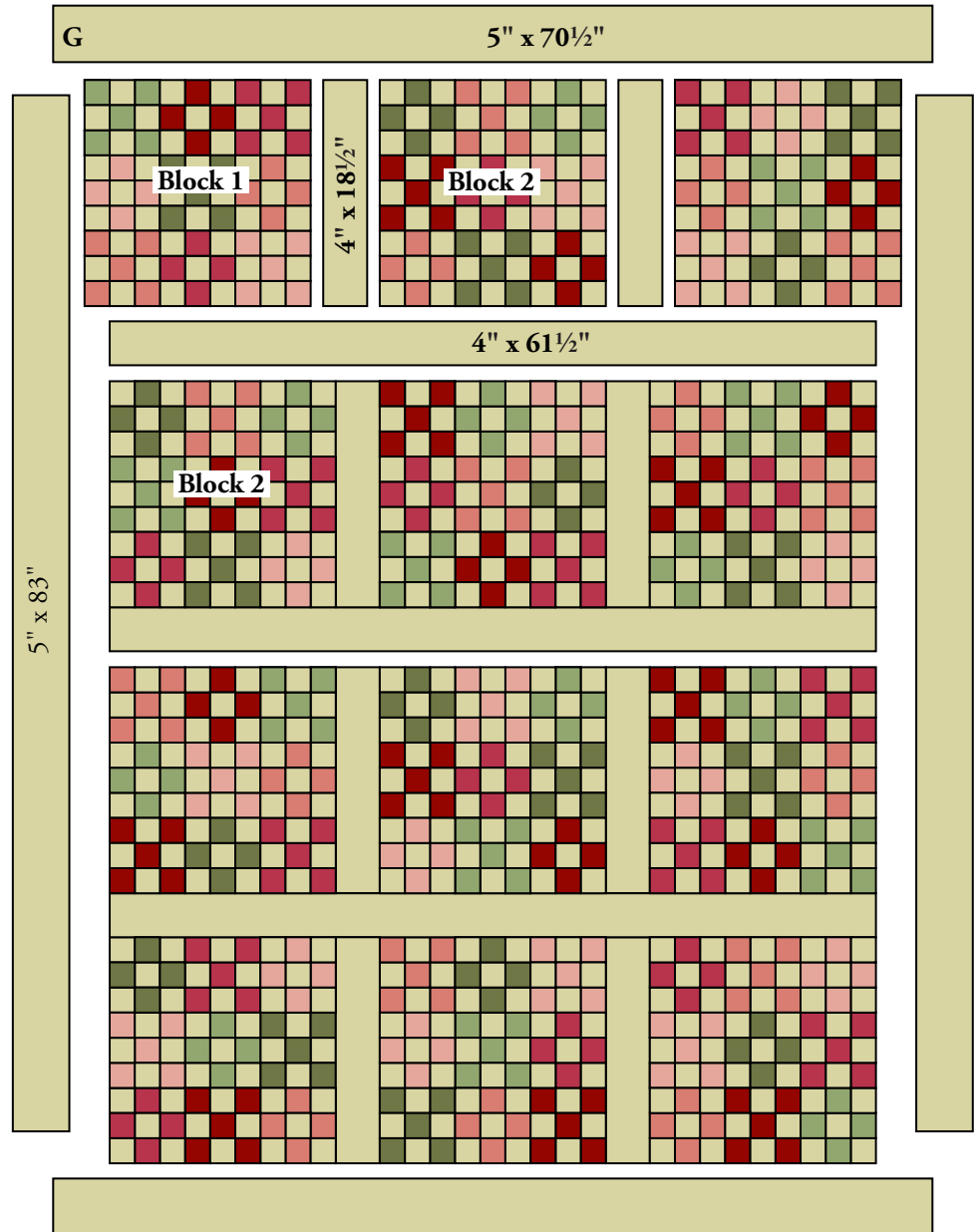
Block 1 – Make 6  
Diagram 3



Block 2 – Make 6  
Diagram 4

## Finishing the Quilt

- Layer the quilt with batting and backing and baste. Quilt in the ditch around borders and block patches. Quilt motifs of your choice in the sashes and border. Bind the quilt to finish.



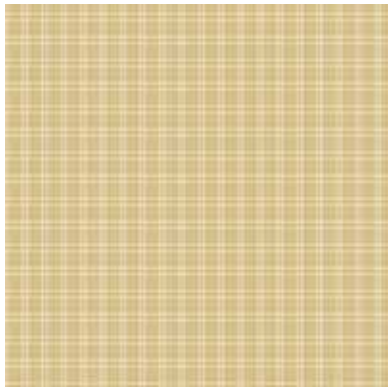
Quilt Diagram

# Garden Gate Plaids

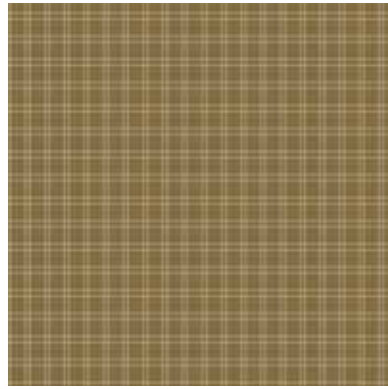
by Renée Nanneman



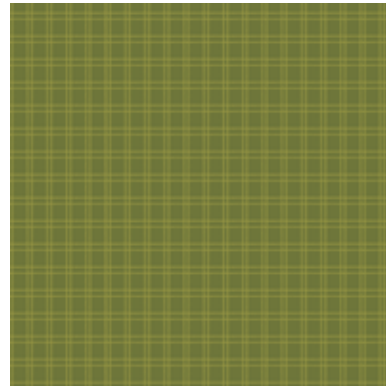
makower uk®



WW-5351-L



WW-5351-N

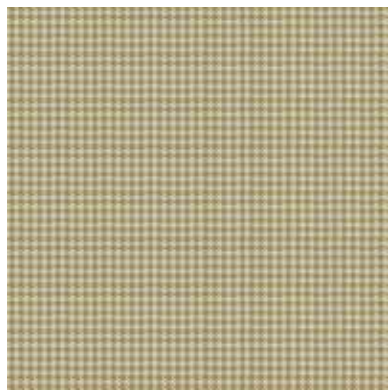


WW-5351-G1

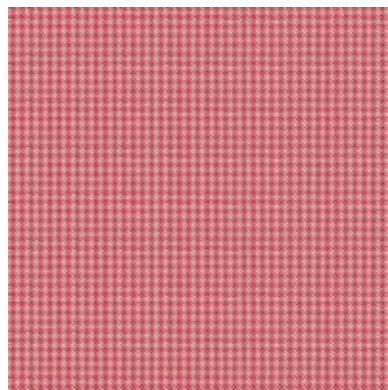
## From Itsy Bits



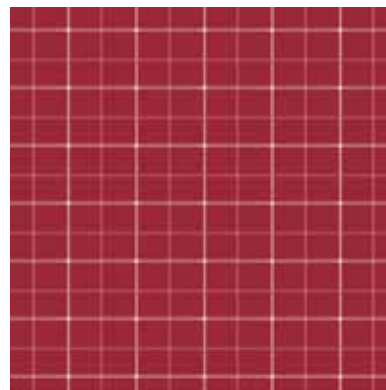
5486-L



WW-5352-T



WW-5352-E



WW-5353-R1

## From Bella Bliss



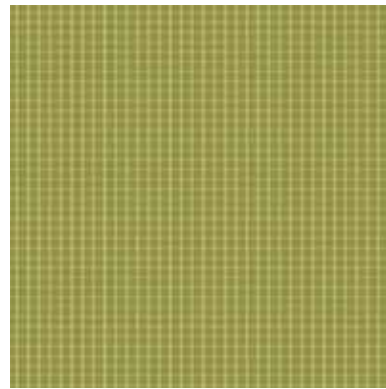
5671-R



WW-5354-B



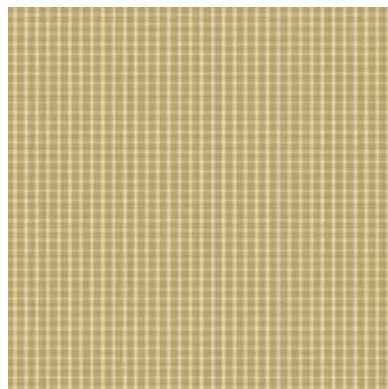
WW-5354-N



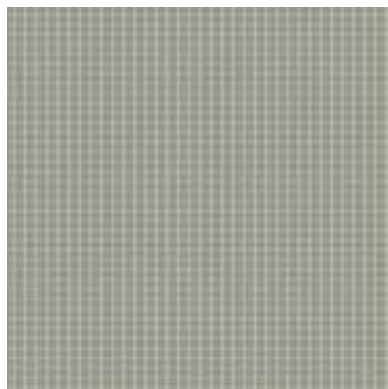
WW-5355-G



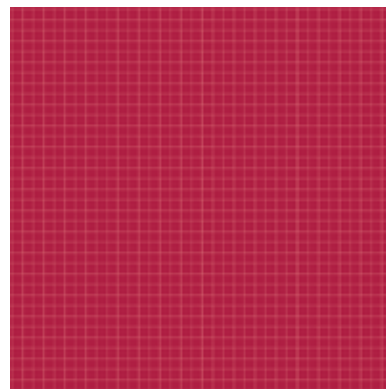
5671-N



WW-5355-L



WW-5355-T



WW-5679-R



5669-N



5668-L